

# A COMPLETE END TO END SUPPLY CHAIN COMPANY

**COLD CHAIN | AMBIENT | HEALTHCARE | FMCG**



**FSSAI, FDCA COMPLIANT & BRCGS ACCREDITED**

[www.coldman.in](http://www.coldman.in)

# ABOUT US



We deliver end to end supply chain solutions to our customers across Food, Healthcare, FMCG and Retail domain.



We offer Solutions from Source to Consumption point which includes ambient, temperature controlled warehousing and distribution.



Our Infrastructure connects Manufacturers, Processors, Distributors and Retailers to end consumer.



We provide value-added services for a wide range of distribution processes, including packing, kitting and labeling activities.

# SERVICE OFFERINGS



## COLD CHAIN

**60,800 Pallets  
Capacity**



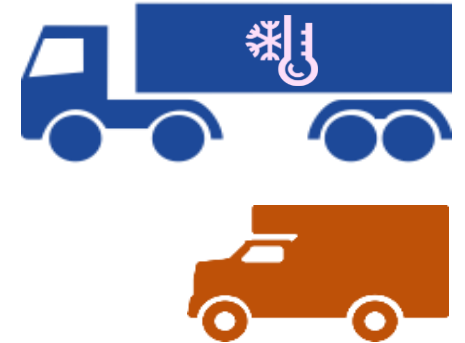
## AMBIENT

**5.00 Lacs Sq. ft.  
Warehousing Space**



## HEALTHCARE

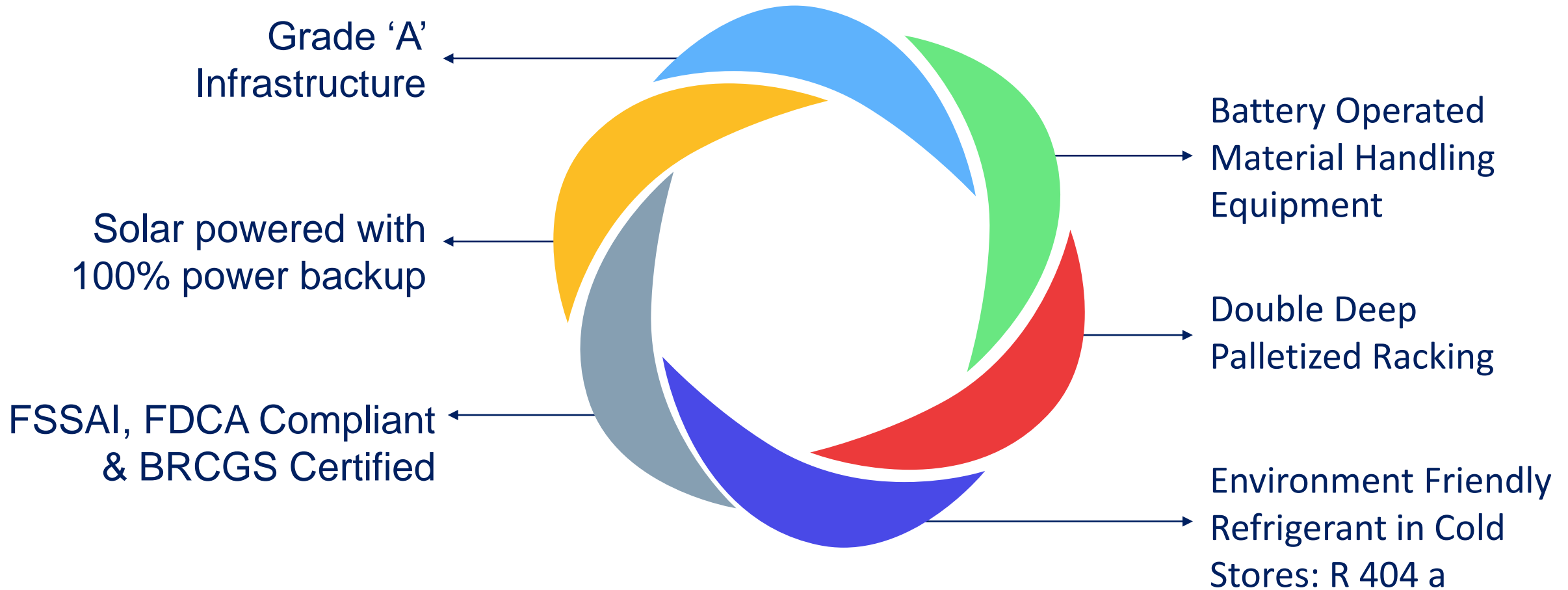
**Built to Suit & customized  
supply chain  
solutions**



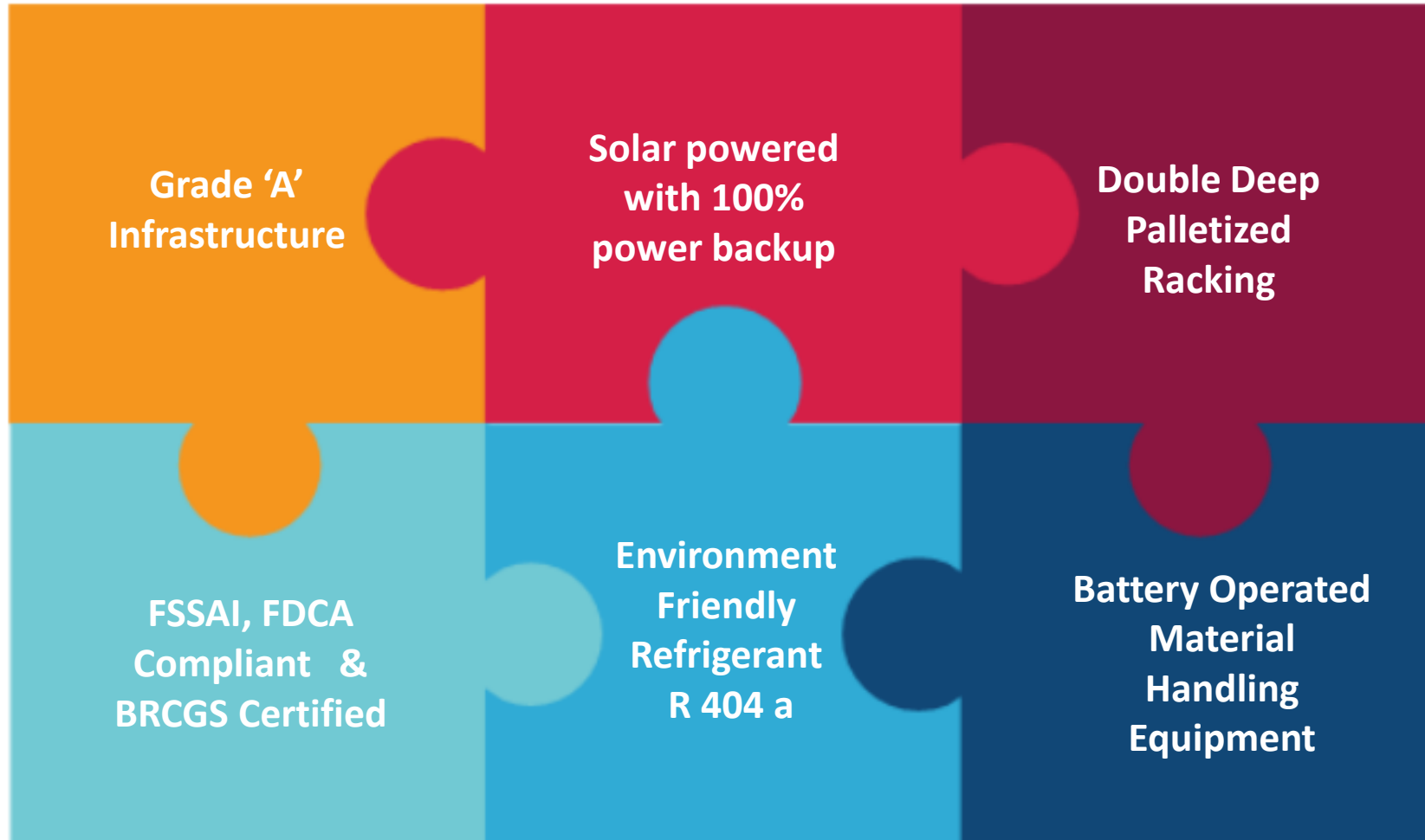
## TRANSPORTATION

**100 + Owned  
Refrigerated  
Fleet**

# ADVANTAGE @ INFRA



# ADVANTAGE @ INFRA



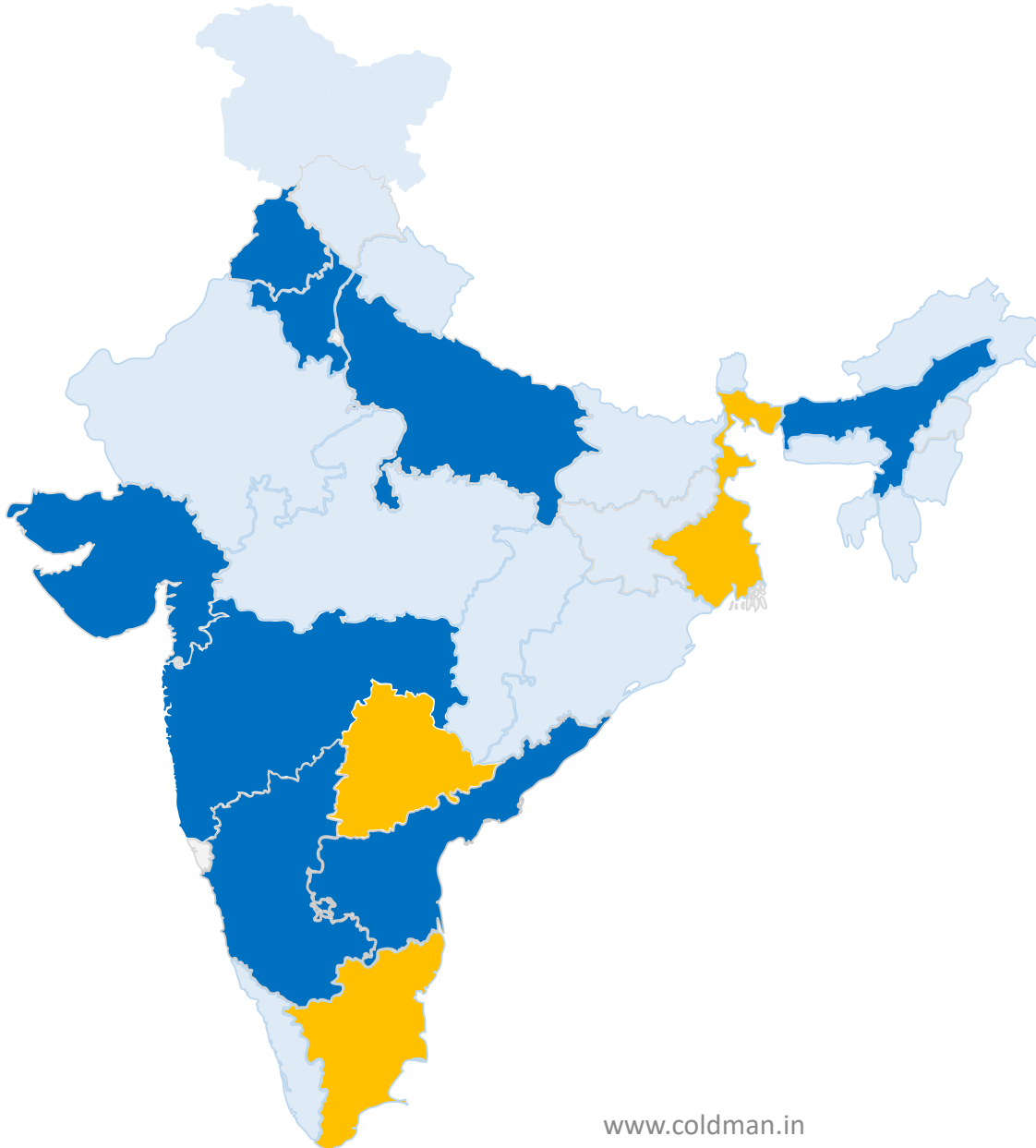
# ADVANTAGE @ SERVICES

Real time Inventory  
Management with  
advanced WMS

Retail Consolidation  
and Distribution  
with e-POD



# ADVANTAGE @ NETWORK



[www.coldman.in](http://www.coldman.in)



## Ahmedabad

6,180 Pallets TCW  
1.00 Lac Sq. Ft Ambient



## Bangalore

5,546 Pallets TCW  
1.0 Lac Sq. Ft Ambient



## Baramati

10,556 Pallets TCW  
1 Lacs Sq. Ft Ambient



## Guwahati

7,684 Pallets TCW  
50,000 Sq. Ft Ambient



## JNPT, Mumbai

5,558 Pallets TCW  
2 Lacs Sq. Ft Ambient



## Supa Parner

3,000 Pallets TCW BTS  
1 Lac Sq. Ft Ambient



## Noida

6,000 Pallets TCW  
1 Lac Sq. Ft Ambient



## Pune

1,500 Pallets TCW



## Rajpura

1 Lacs Sq. Ft Ambient



## Sricity

6,000 TCW  
1.05 Lacs Sq. Ft Ambient



## Sonapat

2,000 Pallets TCW



## Lucknow

2,375 Pallets TCW



## Coimbatore

3,000 Pallets TCW  
50,000 Sq. Ft Ambient



## Kolkata

6,400 Pallets TCW  
1 Lacs Sq. Ft Ambient



# STATE-OF-THE-ART TECHNOLOGY

Air cooled Condenser



Air cooled condensers, which reduces water usage

Material Handling Equipment



Reach truck which are efficient in tight spaces – increasing pallet per sft.

High speed door



Automatic High speed roll on doors for double thermal insulation inside the cold store, thereby reducing electricity

PEB Building



Overhead Door

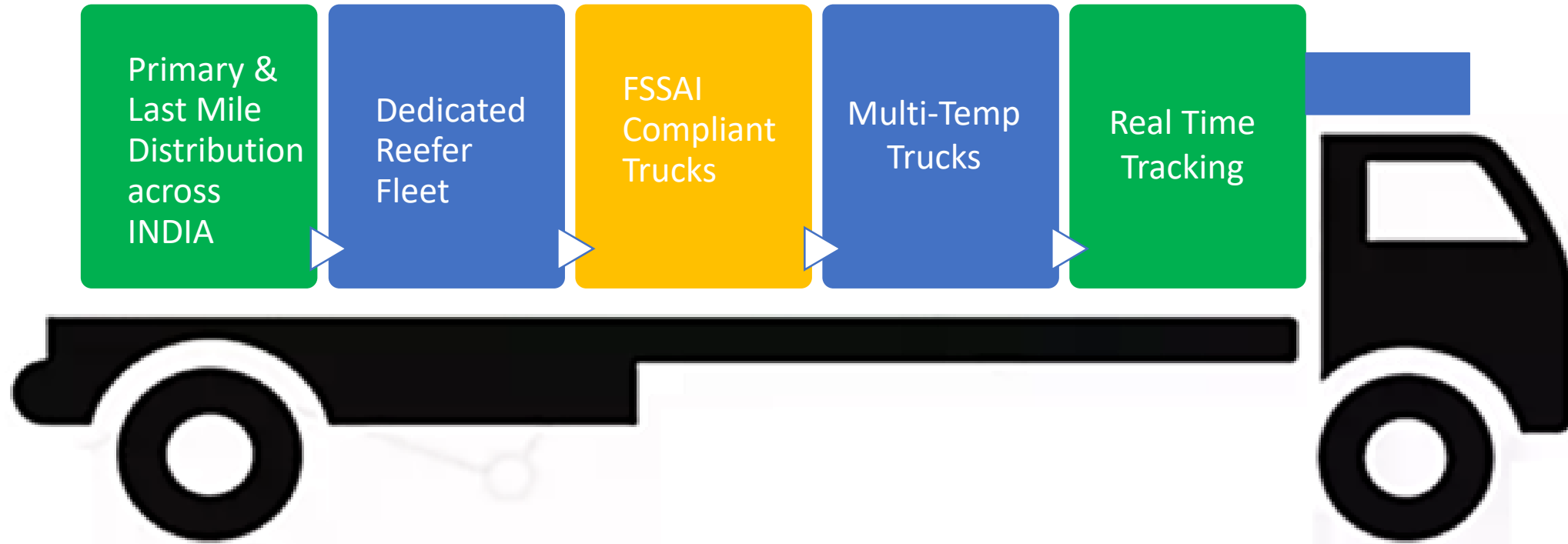


Dock door, shelter and leveller





# TRANSPORTATION



## Pre Trip

- Reefer, vehicle & Data logger inspection
- Pre Cooling
- Product verification

## On Trip

- GPS location & temperature monitoring
- Regular communication with Driver

[www.coldman.in](http://www.coldman.in)

## Post Trip

- Vehicle over speeding report
- Data logger report
- Trip Sheet

# VALUE ADDED SERVICES

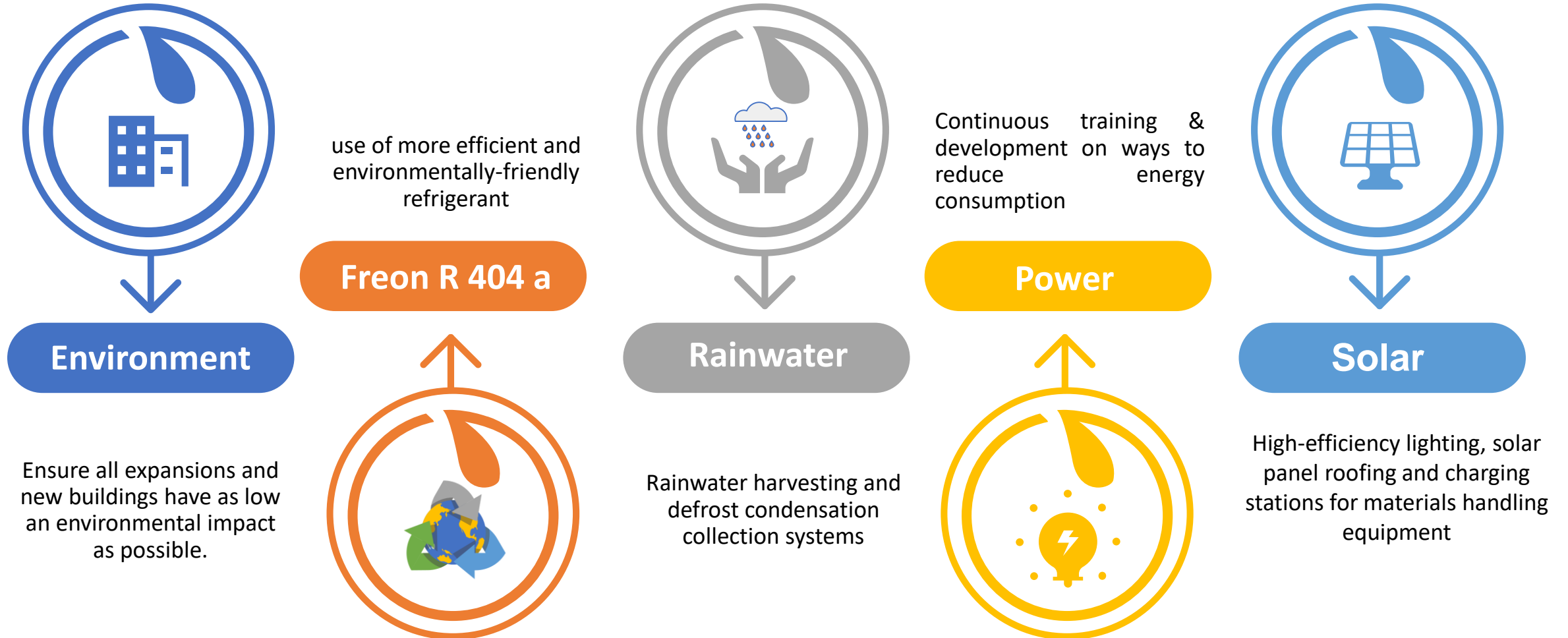


# TECHNOLOGY DRIVEN OPERATIONS



- State of the art ERP Solutions covering all business processes like Warehouse Management, Finance and Accounts Management
- Automated Alerts (SMS/email) for transactions/reports
- Real Time Monitoring of Warehouse Refrigeration System
- Cloud based Transport and Fleet Management System
- Mobile App based real-time access
- e-POD Facility for faster payment turn around
- Tamper Proof GPS & Real Time Temperature Monitoring
- Web Based Remote Controlled Reefer Operations.

# SUSTAINABILITY & RESPONSIBILITY



# INTERNATIONAL AFFILIATIONS & CERTIFICATIONS



# CLIENTELE

## COLD CHAIN



www.coldman.in

## HEALTHCARE



## AMBIENT & FMCG



STRICTLY PRIVATE AND CONFIDENTIAL



# AWARDS & RECOGNITIONS



**Congratulations  
Winner of 6<sup>th</sup> CII Cold Chain Award**

**“Outstanding Performance”**



**Category : Integrated Supply Chain Solutions**



# GALLERY – AMBIENT



Baramati



Baramati



Sricity



Rajpura



Guwahati



Bangalore



# GALLERY – AMBIENT BTS



Ahmedabad



Ahmedabad



Ahmedabad



Bangalore – WYN Brands



Lucknow



Lucknow

# GALLERY – COLD CHAIN



Bangalore



Sri City



Guwahati



Baramati -1



Baramati - 2



# GALLERY – COLD CHAIN (contd..)



Ahmedabad -1



Ahmedabad - 2



Sonapat



Pune



Lucknow

# Thank You

---